

PureFlo Nylon Screen Filter Capsules (Nylon Screen on PP Construction)

Screen Filtration

PureFlo® nylon screen capsule filters are designed for filtration and clarification applications in the pharmaceutical, biotechnology, food and beverage, medical, chemical, and water worldwide. This family of products is particularly suitable for the fluids with large sizes particles. The nylon screen removes particles by a sieving. Hard particles can be easily removed by the use of these units.

The nylon screen in an all-polypropylene construction provides excellent chemical compatibility. It can also be constructed in Nylon, Polyethylene and Gamma stabilized PP shells. PureFlo nylon screen filter capsules are well-suited for applications. No adhesives, binders, or surfactants are used in the manufacturing process. All capsules are rinsed with high-purity water to reduce extractables and downtime in a clean room environment to ensure filter performance each and every time out of the package.



Applications

Clarification	Water
Hard Particle	Beverages
Cell Removal	Pharmaceuticals
Chemicals	Biologics

Specification

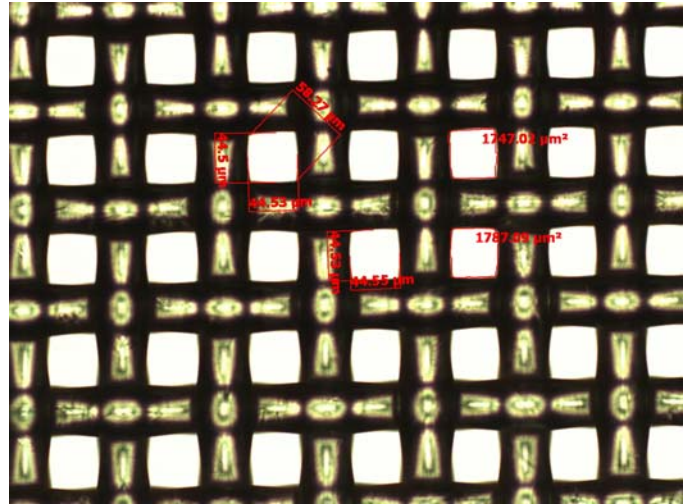
Materials of Construction:	Media: Nylon Screen Media Supports: None Cage, Core, End Caps: Polypropylene Sealing: Thermally bonded
Fitting Connections:	See ordering guide for the availability. (Custom adaptors available upon request)
Nominal Dimensions:	Lengths: 1.5", 2.5", 5", and 10" Diameter: 2.75 in. (70mm)
Available Ratings:	10um, 20um, 40um, 60um, 100um, and 200um
Operating Conditions:	Maximum Forward Differential Pressure: 4.0 bar (58 psid) at 80 °C Maximum Reverse Differential Pressure: 2.0 bar (29 psid) at 80 °C Maximum Operating Temperature: 80° C
Regulatory Compliance:	The filters are constructed with polypropylene resins and filtration media in compliance with 21CFR Part 177 of the US Code of Federal Regulations and USP Class VI Biological Test for Plastic.

PureFlo Nylon Screen Filter Capsules

Specifications (cont.)

Sanitization:

The filters can be sterilized by autoclaving for up to 25 cycles at 125°C (250°F) for 60 minutes. The filters can also be sanitized by hot water or common chemicals that are compatible with Nylon and polypropylene.



60um Nylon Screen

PureFlo Nylon Screen Filter Capsule Ordering Guide

PureFlo Capsule Filters	Vent & Drain Fitting	Filter Media	Pore size (Micron)	Length (Internal Filter)	Input Fitting	Output Fitting	Options
SK Media on All PP Construction 70mm Diameter Capsule	L = Female Luer Lock P = M8 Threaded Plug - <u>Limited Options</u> N = No vent or drain fittings	NS = Nylon Screen	100 = 10 200 = 20 400 = 40 600 = 60 10X = 100 20X = 200	H = 1.5" S = 2.5" L = 5" K = 10"	1H = 1/8" Hose barbs 1NF = 1/8" FNPT 1QF = 1/8" Female Quick Coupling with Metal latch 2C = 1/4" Compression 2H = 1/4" to 1/2" Hose barbs 2HS = 1/4" to 3/8" Hose barbs 2LF = Large Female Luer Lock fitting 2N = 1/4" MNPT 2NF = 1/4" FNPT 2Q = 1/4" Male Quick Coupling for Metal latch 2QF = 1/4" Female Quick Coupling with Metal latch 2QFP = 1/4" Female Quick Coupling with Plastic latch 2QP = 1/4" Male Quick Coupling for Plastic latch 3C = 3/8" Compression 3H = 3/8" Hose Barb 3HE = 3/8" Hose Barb Elbow 3NF = 3/8" FNPT 4C = 1/2" Compression 4H = 1/2" Hose Barb 4N = 1/2" MNPT 4QP = 1/2" Male Quick Coupling for Plastic latch MT = 1/2" Tri clamps TC = 1-1/2" Tri clamp	1H = 1/8" Hose barbs 1NF = 1/8" FNPT 1QF = 1/8" Female Quick Coupling with Metal latch 2C = 1/4" Compression 2H = 1/4" to 1/2" Hose barbs 2HS = 1/4" to 3/8" Hose barbs 2LF = Large Female Luer Lock fitting 2N = 1/4" MNPT 2NF = 1/4" FNPT 2Q = 1/4" Male Quick Coupling for Metal latch 2QF = 1/4" Female Quick Coupling with Metal latch 2QFP = 1/4" Female Quick Coupling with Plastic latch 2QP = 1/4" Male Quick Coupling for Plastic latch 3C = 3/8" Compression 3H = 3/8" Hose Barb 3HE = 3/8" Hose Barb Elbow 3NF = 3/8" FNPT 4C = 1/2" Compression 4H = 1/2" Hose Barb 4N = 1/2" MNPT 4QP = 1/2" Male Quick Coupling for Plastic latch MT = 1/2" Tri clamps TC = 1-1/2" Tri clamp	Blank = PP construction -FB = Filling bell -ETO = Ethylene oxide sterilization -NI = No vent or drain inlet fitting -NO = NO vent or drain Outlet fitting -E = Polyethylene Shell -GP = Gamma stable polypropylene shell -NY = Nylon Shell Oring for Quick Coupling -OE = O-ring EPDM -ON = O-ring Nitrile -OV = O-ring Viton Blank = O-ring Silicon (standard)
Example - 20um Nylon Screen, Luer Lock V/D, 5" internal filter, 1/4" MNPT I/O is SKLNS200L2N2N							
<small>Quick Couplings are compatible with CPC (Colder), LinkTech and others fittings.</small>							

Your Local Distributor:

ZenPure

North & South Americas:
 ZenPure Americas, Inc
www.zenpure.com
info-us@zenpure.com
 703-335-9910

All Other Regions:
 ZenPure Corporation
www.zenpure.com
info@zenpure.com
 +86 571 2288 6800

ZenPure and PureFlo are registered trademarks of ZenPure Corporation or an affiliated company. Copyright 2003-2009 ZenPure or an affiliated company. All rights reserved.

