

Ideal for Monitoring 0.15 $\mu$ m Particles in Photoresist,  
SOG, and Other Solutions



# Liquid-Borne Particle Sensor

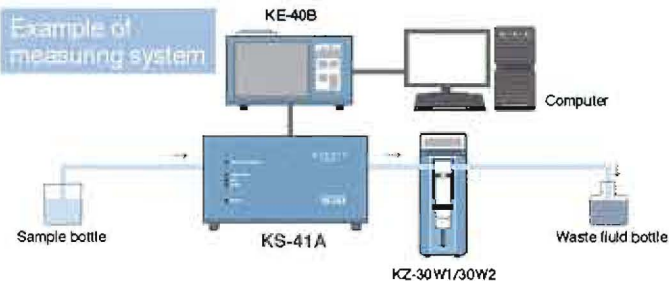
## NEW KS-41A

- Detects particles in photoresist down to 0.15  $\mu$ m size, at a flow rate of 10 mL per minute
- Four particle size categories by default: 0.15  $\mu$ m, 0.2  $\mu$ m, 0.3  $\mu$ m, 0.5  $\mu$ m and higher
- Integrated leak sensor with alarm output
- Freely definable categories within measurement range (using KE-40B function)



## Specifications[KS-41A]

Optical system	Lateral light-scattering method
Light source	Semiconductor laser (wavelength 830 nm, rated output 200 mW)
Laser product classification	Class 1, IEC 60825-1 2001
Light detector	PIN type 10-segment photodiode arrangement
Fluid contact materials	Synthetic quartz, PFA
Allowable sample fluid types	Fluids which do not penetrate the fluid contact materials
Calibration	Polystyrene latex spheres with refractive index 1.6 in pure water
Particle size categories	
4 categories (factory default)	0.15 $\mu\text{m}$ and higher, 0.2 $\mu\text{m}$ and higher, 0.3 $\mu\text{m}$ and higher, 0.5 $\mu\text{m}$ and higher
User defined categories	1 to 10 categories freely definable, setting made from Controller
Setting range	0.15 $\mu\text{m}$ to 0.5 $\mu\text{m}$
Count efficiency	50 $\pm$ 10 %
Sample flow rate	10 mL/min
Maximum particle density	1200 particles/mL (coincidence loss 5 % for 0.15 $\mu\text{m}$ particles)
Allowable sample fluid pressure	300 kPa or less (gauge pressure)
Sample fluid connectors	Sample fluid inlet/outlet 2 x 4 dia. flared tube joint
Purge connector	Pc 1/8 (1/8 PT) female
Input/output connectors	
CONTROLLER connector	For connection to KE-40B
LIQUID LEAK	Shorted during normal operation, open when Internal leak was detected, for alarm activation
ALARM connector	
Power supply	DC12 V (supplied from KE-40B)
Ambient conditions for operation	15 °C to 30 °C less than 85% RH (no condensation)
Dimensions and weight	160 (H) x 300 (W) x 250 (D) mm (excluding protruding parts), Approx. 7.5 kg
Supplied Accessories	Tube A vacuum pack x 1 (2 x 4 dia. PFA tube with flared joint at one end, 1.5 m x 2, Union joint x 1) Cleaning brush set x 1

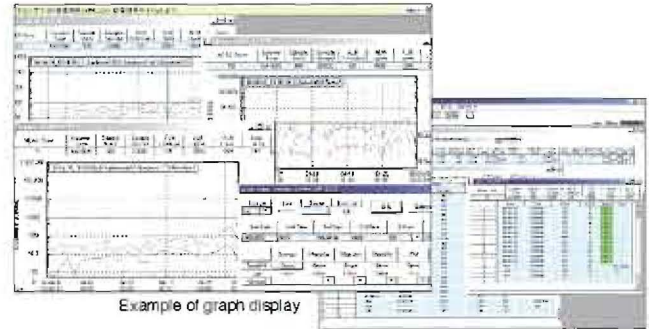


## RP monitor K9461 Ver. 2

Enables automatic control of particle counter, data collection, real-time graph display, filing and printout using a computer

- Enables data processing using spreadsheet software (Windows Excel, etc.)
- Enables one-to-one control of RION particle counters in the RS-232C mode

Compatible OS: Microsoft Windows 2000/XP



## Syringe Sampler KZ-30W1/30W2

For batch measurement of liquid-borne particle sensor

• Connecting cable (KZ30S180, optional)



For operational control of particle sensor and display of measurement data

Controller KE-40B **NEW**

- Particle size range can be set arbitrarily up to 10 channels
- Printer is built in. Data can be stored in a memory card (CF card)



## Specifications[KE-40B]

Display	
Display items	Particle size range (max. 10 channels), Count (max. 8 digits)
Operating portion	Touch panel, Sheet switch
Measurement	
Measurement time	10 sec. to 2 h, and manually
Measurement mode	Manual measurement Automatic measurement: mean value measurement, Periodic measurement, Scheduled time measurement
Alarm	When a measured value of a selected channel reaches or exceeds the set alarm level, a buzzer sounds and alarm terminals shorted by means of relay contact Maximum connected load: DC 30 V, 1 A
Communication	RS-232C
Printer	Printout of measurement results, date and time
Recording paper	Thermal paper TP-08, Clean thermal paper TP-10
Memory	Compact flash (CF) card*(automatic storage in TSV format)
Power requirements	AC100 V to 240 V, 50/60 Hz, 75 VA
Dimensions and weight	140 (H) x 240 (W) x 150 (D) mm (excluding protrusions), Approx. 3.8 kg
Accessories	Power cord x1, Connecting cable (1 m) x1, Thermal paper TP-08 x2 rolls, Touch pen, Dummy card
Options	Communication cable CC-81A, Connecting cable (5 m) KE-40-125, Thermal paper TP-08, Clean thermal paper TP-10, Memory card (128 MB) MC-12CF1 (256 MB) MC-25CF1, CF card adapter MC-CFADP
Factory option	D/A converter interface KE-40-S06

\*Use only RION supplied cards for assured operation

\* Company names and product names mentioned in this catalog are usually trademarks or registered trademarks of their respective owners  
\* Specifications subject to change without notice.

ISO 14001 RION CO., LTD.  
ISO 9001 RION CO., LTD.



Distributed By:



Phone: 703-335-9910  
Fax: 703-310-6232  
Email: info@jaltechnologies.com



3-20-41, Higashimotomachi, Kokubunji,  
Tokyo 185-8533, Japan  
Tel: +81-423-59-7878, Fax: +81-423-59-7458