

# Liquid-Borne Particle Sensor



Counting efficiency improved to 10 % (10 times larger than former model KS-17AF)

High sensitivity allows measurement of  $0.05 \mu\text{m}$  particles in liquid

## Liquid-Borne Particle Sensor

NEW

# KS-18F

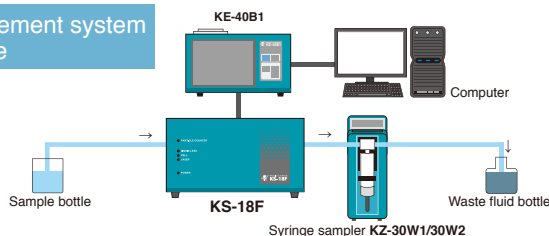
- Detects particles down to  $0.05 \mu\text{m}$  size, at a flow rate of 10 mL per minute
- Four particle size range (4 channels, factory default setting)  $\geq 0.05 \mu\text{m}$ ,  $\geq 0.1 \mu\text{m}$ ,  $\geq 0.15 \mu\text{m}$ ,  $\geq 0.2 \mu\text{m}$
- Integrated leak sensor with alarm output
- Sapphire flow cell
- User selectable channels within measurement range (using KE-40B1)
- Particle size resolution enhancement technology employed (patented)



## Specifications [KS-18F]

Optical system	Light-scattering method
Light source	Diode pumped solid state laser (rated output 500 mW, wavelength 532 nm)
Laser product classification	Class 1, IEC 60825-1
Light detector	Multi-channel silicon photodiode
Fluid contact materials	Sapphire, PFA
Allowable sample fluid types	Fluids which do not corrode the fluid contact materials
Calibration	Polystyrene latex (PSL) particles with refractive index 1.6 in pure water
Particle size range	
4 channels (factory default)	$\geq 0.05 \mu\text{m}$ , $\geq 0.1 \mu\text{m}$ , $\geq 0.15 \mu\text{m}$ , $\geq 0.2 \mu\text{m}$
User selectable channels	1 to 10 channels
Setting range	0.05 $\mu\text{m}$ to 0.2 $\mu\text{m}$
Sample flow rate	10 mL/min
Counting efficiency	10 % $\pm 3$ %
Particle resolution	10 % or less (PSL particles in 0.15 $\mu\text{m}$ range)
Maximum particle concentration	15 000 particles/mL (coincidence loss 5 %), 30 000 particles/mL (coincidence loss 10 %)
Allowable sample fluid pressure	300 kPa (gauge pressure)
Sample fluid connectors	Sample fluid inlet/outlet 2 x 4 dia. flared tube joint
Purge connector	Rc 1/8 (1/8 PT female)
Input/output connectors	
CONTROLLER	Connection to KE-40B1
LIQUID LEAK ALARM	Relay contacts
Ambient conditions for operation	15 °C to 30 °C, less than 80 % RH (no condensation)
Power supply	DC12 V (supplied from KE-40B1)
Dimensions and weight	147 (H) x 272 (W) x 442 (D) mm (excluding protruding parts), approx. 10 kg
Supplied Accessories	Tube A vacuum pack x 1 (2 x 4 dia. PFA tube with flared joint at one end, 1.5 m x 2, Union joint x 1), connection cable (1 m) x 1
Optional accessories	Connection cable (5 m) KS-42-127

## Measurement system example



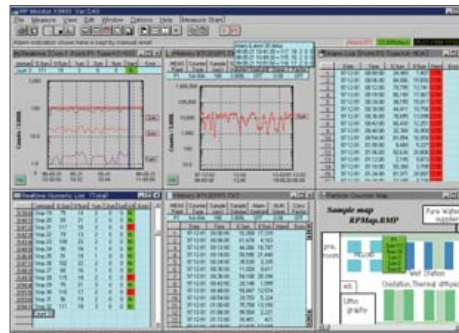
## RP monitor K9461 Ver. 2

Option

Enables automatic control of particle counter, data collection, real-time graph display, filing and printout using a computer

- Enables data processing using spreadsheet software (Windows Excel, etc.)
- Enables one-to-one control of RION particle counters in the RS-232C mode

Compatible OS: Microsoft Windows 2000/XP



Sample display

## Syringe Sampler KZ-30W1/30W2

For batch measurement of liquid-borne particle sensor.

\* Connecting cable (KZ30S180, option)



For operation control of particle sensor and display of measurement data

Controller KE-40B1 **NEW**

- Particle size range can be freely set for up to 10 channels.
  - Built-in printer.
- Measurement data can be stored on memory card (CF card).



## Specifications [KE-40B1]

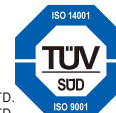
Display	
Display items	Particle size range (max.10 channels), Count (max. 8 digits)
Controls	Touch panel, Sheet switches
Measurement	
Measurement time	10 seconds to 2 hours, or manual
Measurement modes	Manual measurement Automatic measurement: mean value measurement, moving average measurement, periodic measurement, scheduled time measurement
Alarm	When measured value in a selected channel reaches or exceeds the preset alarm level, a buzzer sounds and alarm terminals are shorted by relay contacts Maximum connected load: DC 30 V, 1 A
Communication	RS-232C
Printer	Printout of measurement results, date and time
Recording paper	Thermal paper: TP-08, Clean thermal paper: TP-10
Memory	CompactFlash (CF) card*(automatic storage in TSV format)
Power requirements	100 to 240 V AC, 50/60 Hz, 130 VA
Dimensions and weight	140 (H) x 240 (W) x 150 (D) mm (excluding protruding parts), approx. 3 kg
Accessories	Power cord x 1, Thermal paper TP-08 x 2 rolls, Touch pen, Dummy card
Optional accessories	Communication cable CC-61A, Thermal paper TP-08, Clean thermal paper TP-10, Memory card(128 MB) MC-12CF1/(256 MB)MC-25CF1, CFcard adapter CFC-ADP03
Factory option	D/A converter interface KE-40-S06

\*Use only RION supplied cards for assured operation.

\* Company names and product names mentioned in this catalog are usually trademarks or registered trademarks of their respective owners.

\* Specifications subject to change without notice.

ISO 14001 RION CO., LTD.  
ISO 9001 RION CO., LTD.



Distributed By:



Phone: 703-335-9910  
Fax: 703-310-6232  
Email: Info@jaltechnologies.com



3-20-41, Higashimotomachi, Kokubunji,  
Tokyo 185-8533, Japan  
Tel: +81-423-59-7878, Fax: +81-423-59-7458